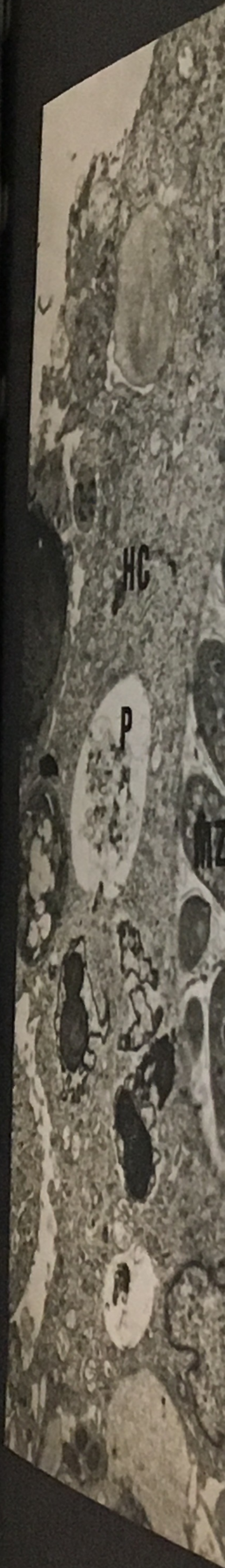


Figure 2-14. Infected cell harboring second generation schizont (120 hours post infection). This electron micrograph shows several leucocytes and red blood cells within cytoplasm of the host cell indicating phagocytic activity. (x 4,800).



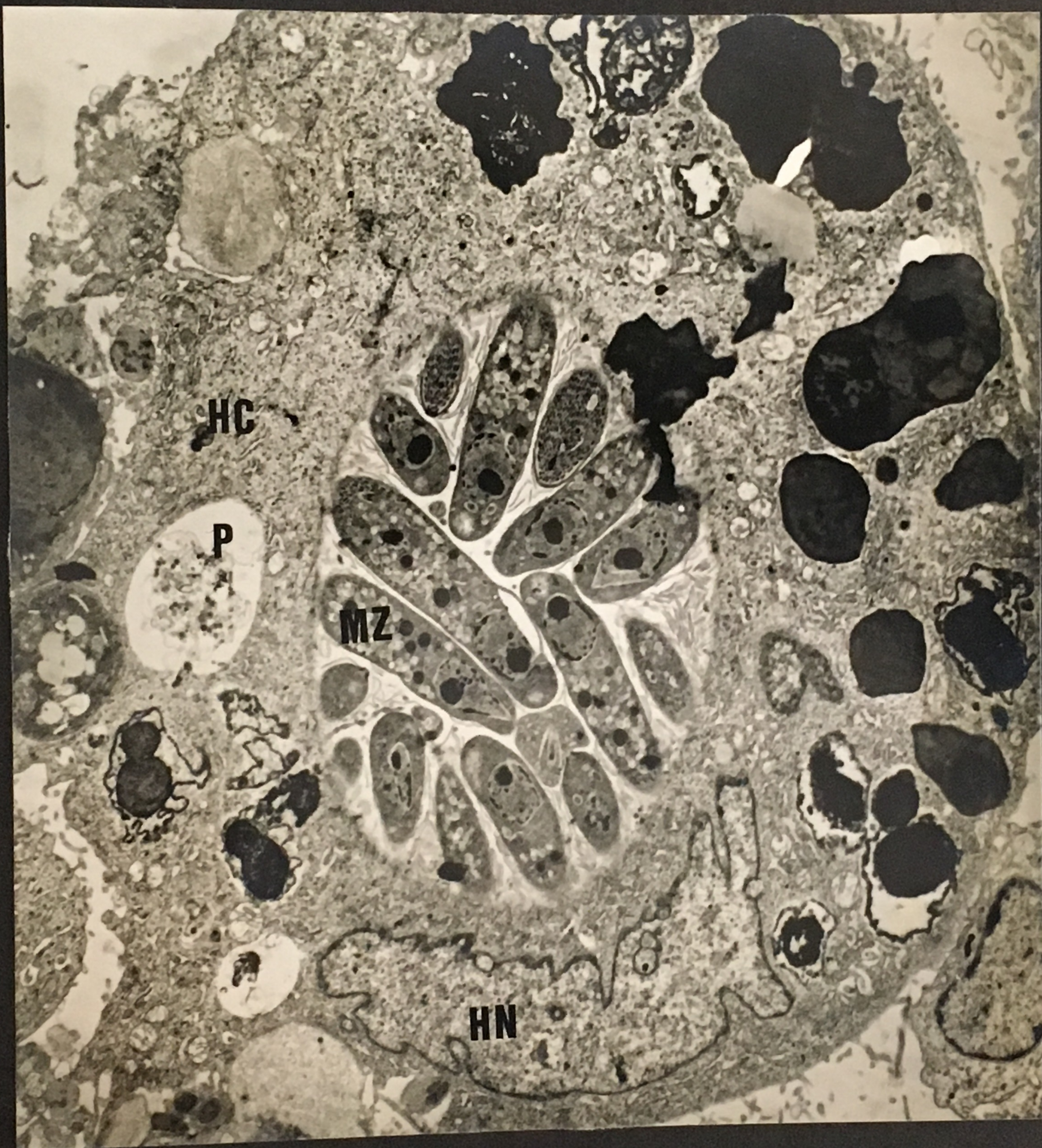
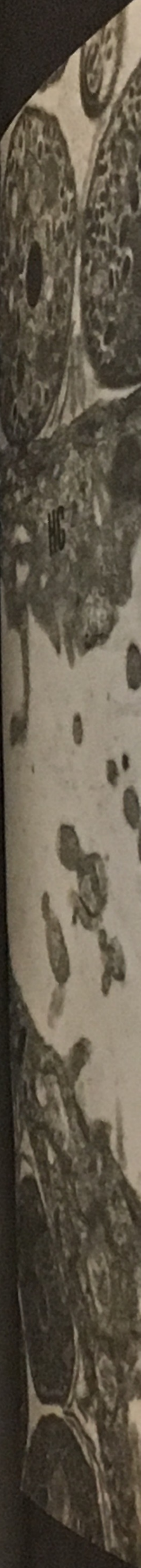


Figure 2-15. Mature second generation schizonts (120 hours post infection). Plasma membranes of three infected cells showing many projections and vesicle formation. (x 16,800).



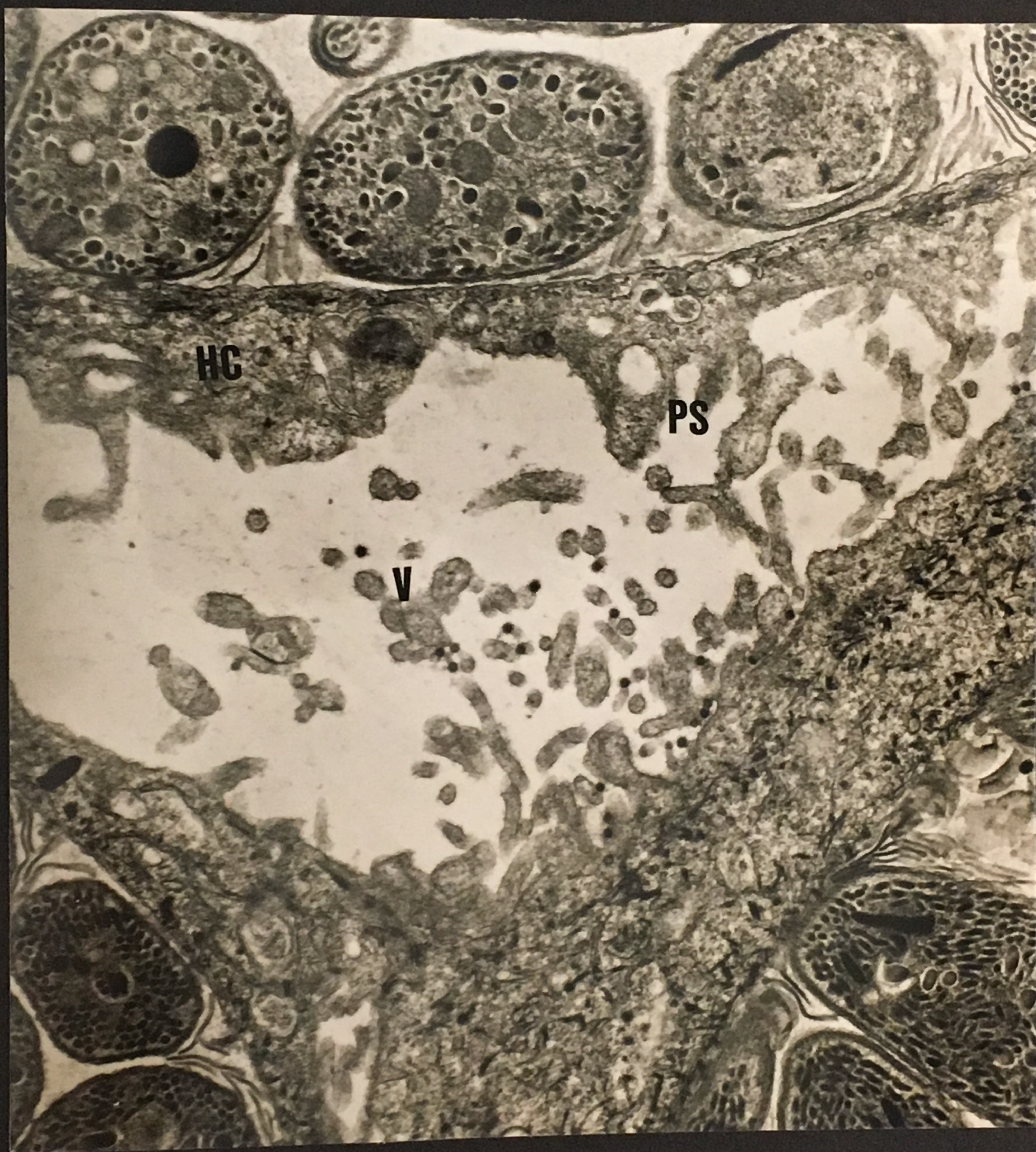


Figure 2-16. Total leucocyte counts and total daily oocyst output of chickens inoculated with 1×10^3 oocysts. Each point represents the mean of four chickens.

Legend: (——) Total leucocyte counts of infected chickens.

(.....) Total leucocyte counts of control chickens.

(.....) Total daily oocyst output.

S = significantly different from controls

($P < 0.05$).

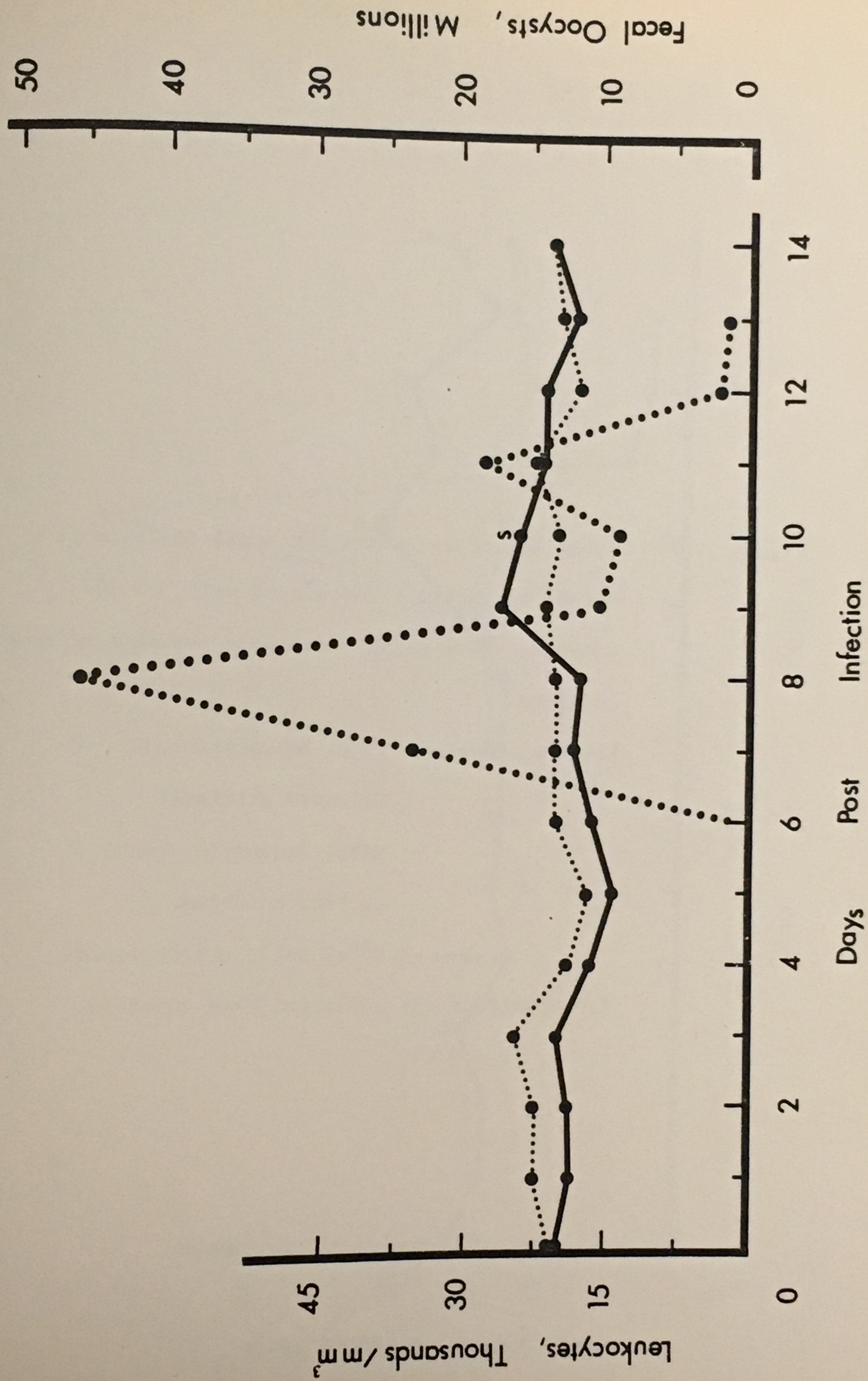


Figure 2-17. Total leucocyte counts and total daily oocyst output of chickens inoculated with 5×10^3 oocysts. Each point represents the mean of four chickens.

Legend: (——) Total leucocyte counts of infected chickens.

(.....) Total leucocyte counts of control chickens.

(.....) Total daily oocyst output.

S = significantly different from controls
($P < 0.05$).

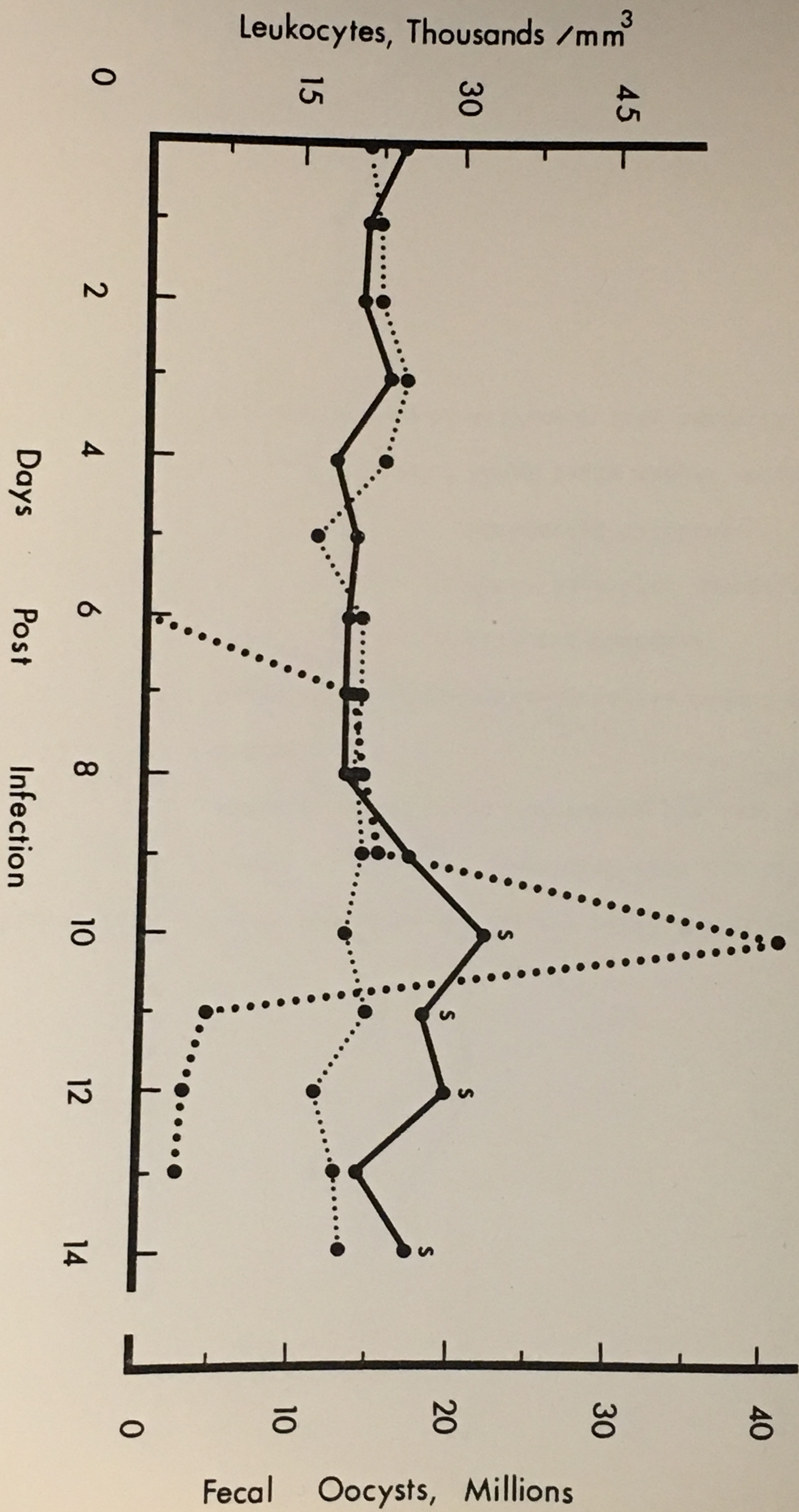


Figure 2-18. Total leucocyte counts and total daily oocyst output of chickens inoculated with 1×10^4 oocysts. Each point represents the mean of four chickens.

Legend: (—) Total leucocyte counts of infected chickens.

(.....) Total leucocyte counts of uninfected chickens.

(.....) Total daily oocyst output.

S = significantly different from controls ($P < 0.05$).